



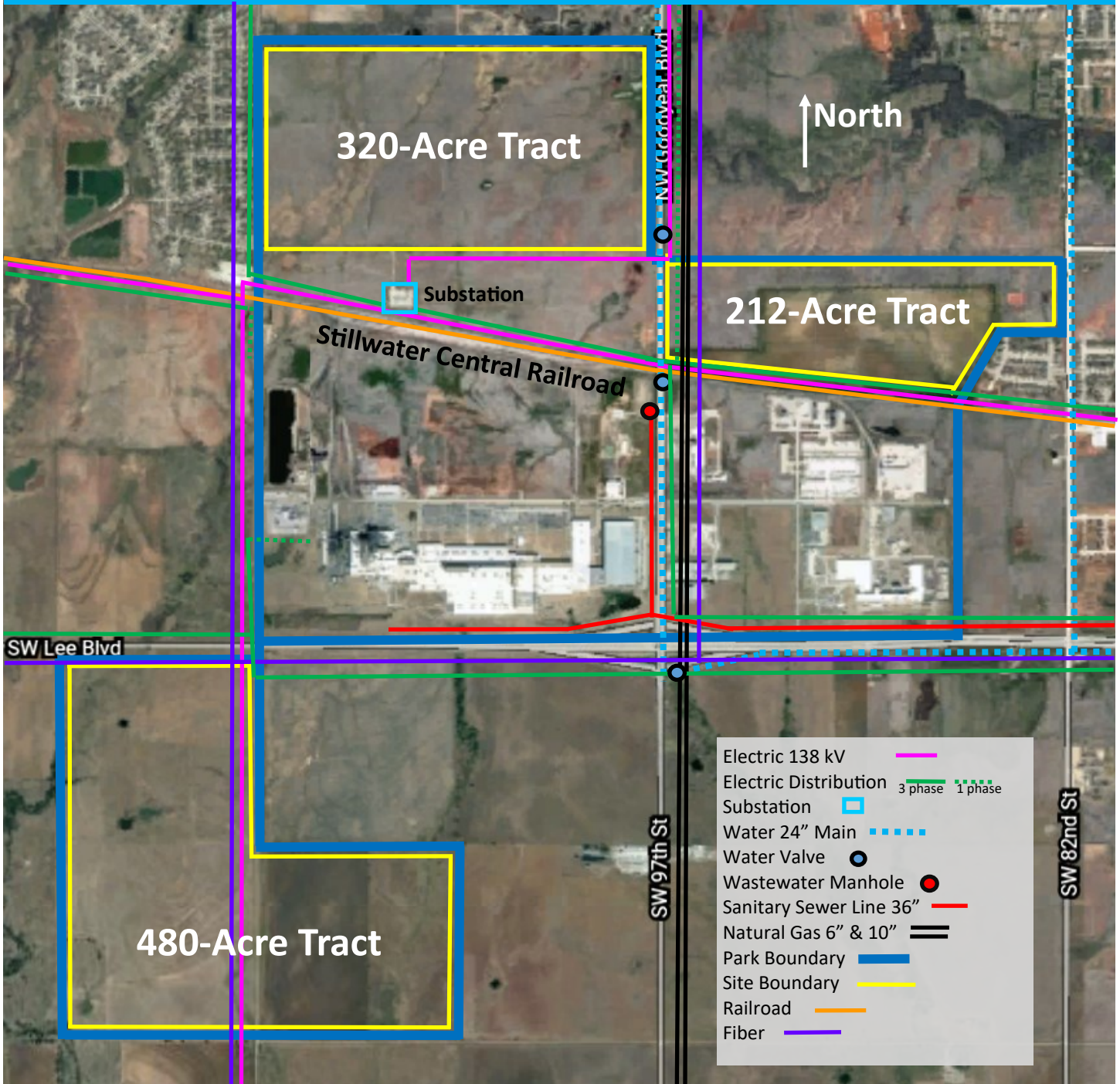
# LAWTON | FORT SILL ECONOMIC DEVELOPMENT CORPORATION

302 W Gore Blvd, Lawton OK 73501

[www.lawtonedc.com](http://www.lawtonedc.com)

580-353-7356

## OK SW RAIL INDUSTRIAL PARK—UTILITIES



The 212 tract is owned by the Lawton-Fort Sill Economic Development Corporation (LEDC). The 320 and 480 tracts are owned by the Comanche County Industrial Development Authority (CCIDA). LEDC has full authority to offer these lands to projects.